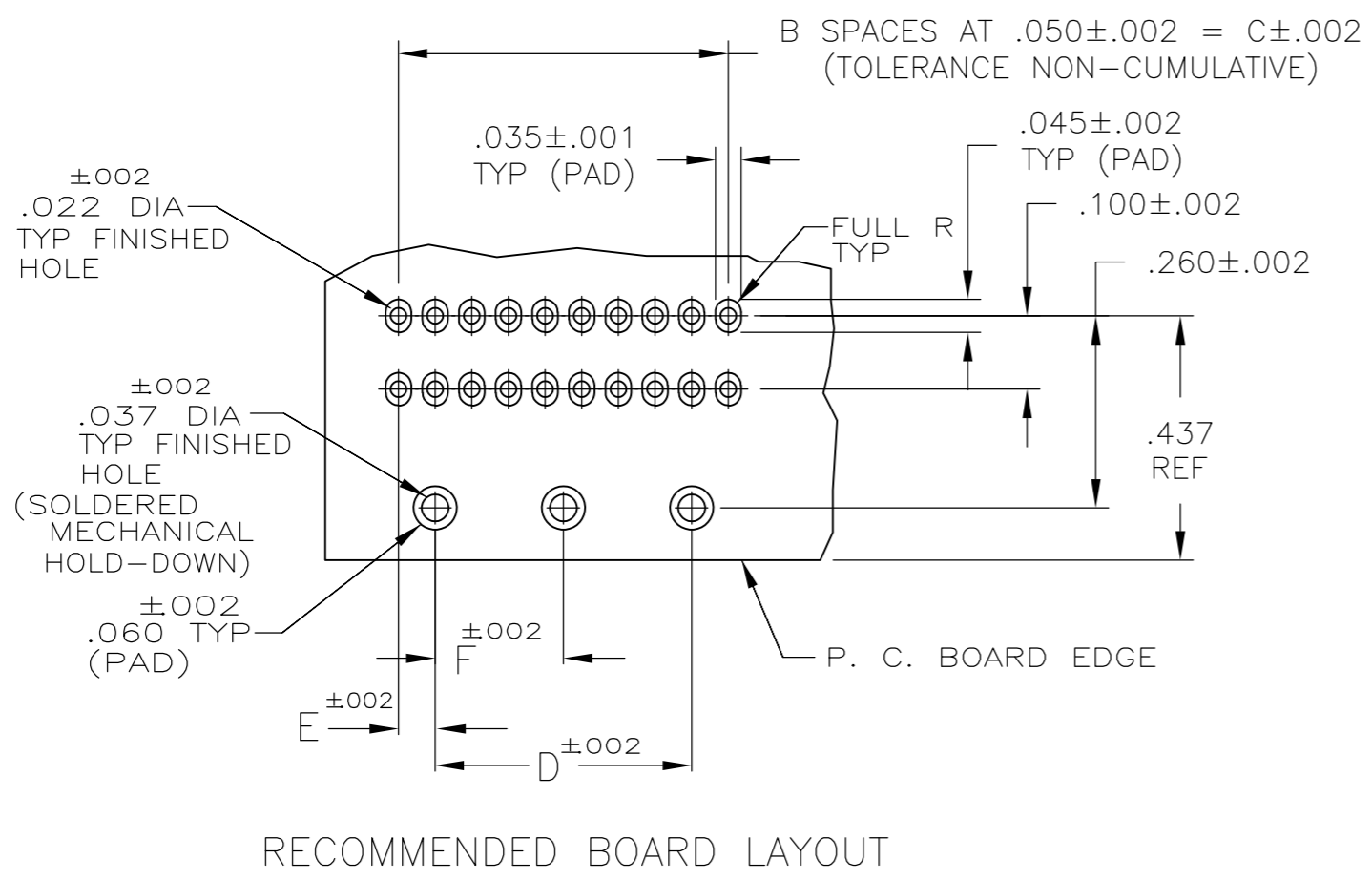
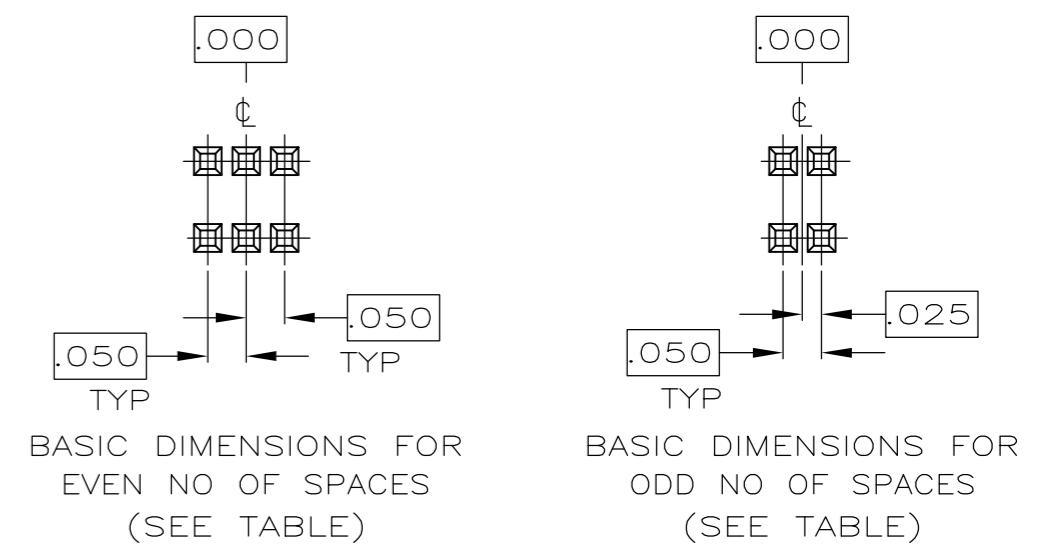
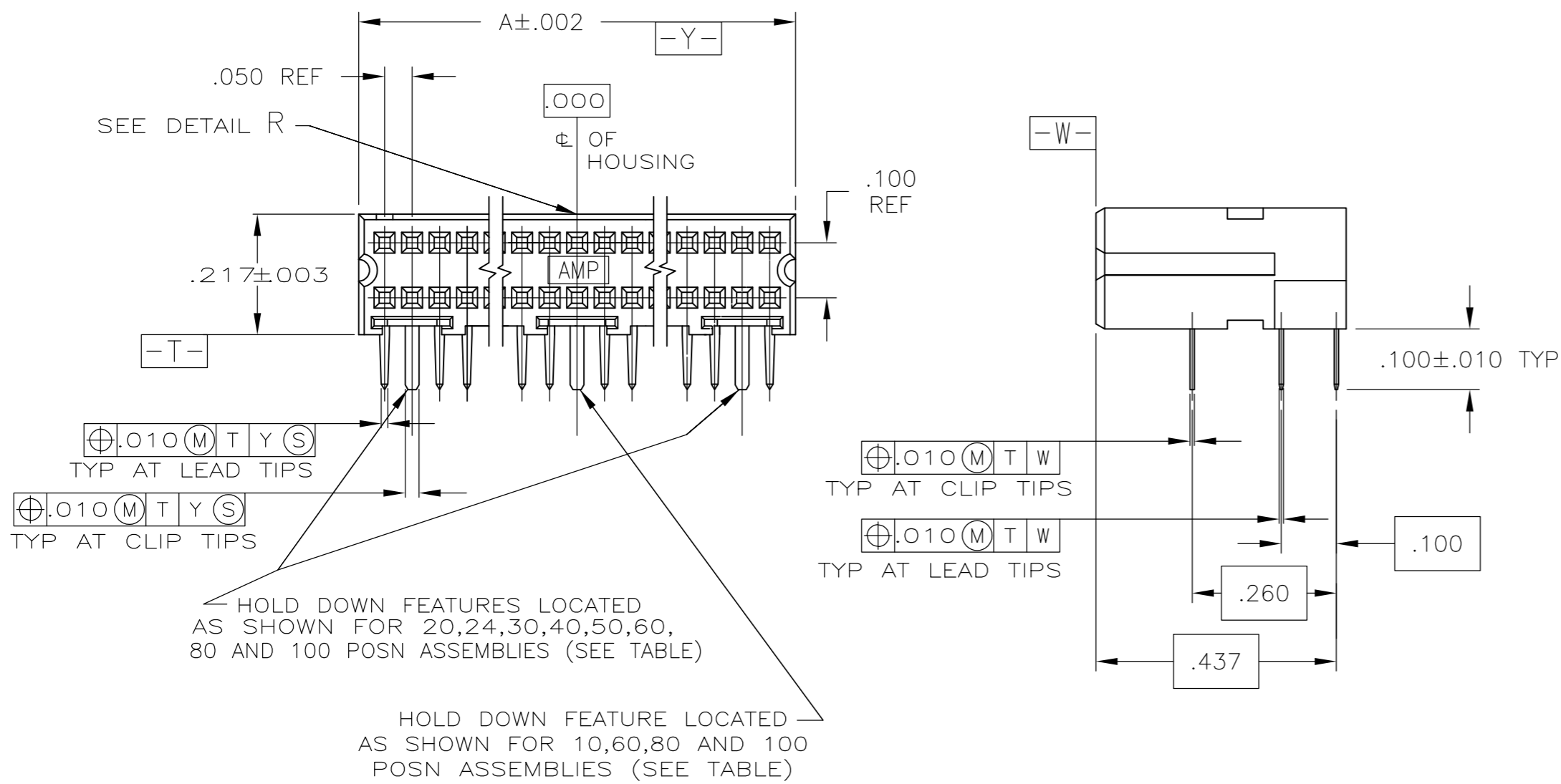
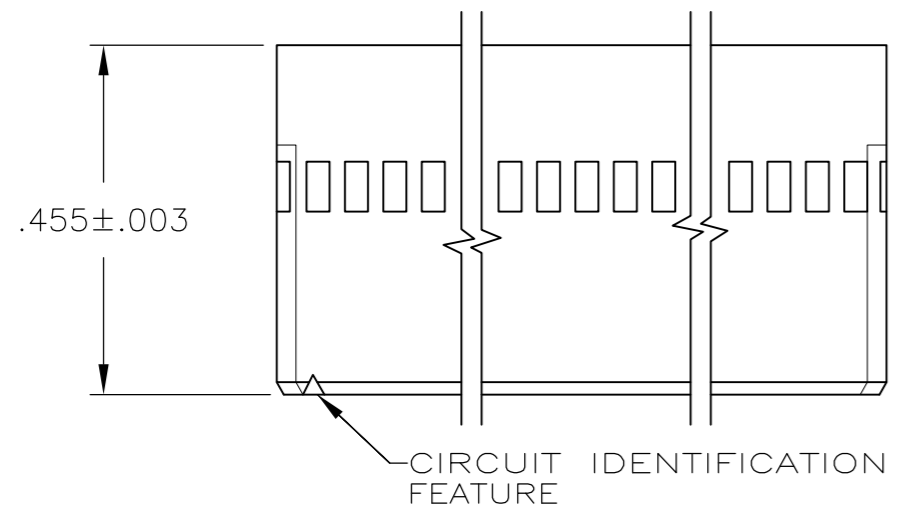


THIS DRAWING IS UNPUBLISHED. RELEASED FOR PUBLICATION  
 © COPYRIGHT - By - ALL RIGHTS RESERVED.

LOC	DIST	REVISIONS			
P	LTR	DESCRIPTION	DATE	DWN	APVD
AD	39	M	REVISED PER ECO-14-004696	08APR2014	NK JO



THIS DRAWING IS A CONTROLLED DOCUMENT.		DWN	D CLOUSER	3-20-86		TE Connectivity		
DIMENSIONS: INCHES		CHK	J S STARON	3-20-86		NAME		
TOLERANCES UNLESS OTHERWISE SPECIFIED:		APVD	J S STARON	3-20-86		PRODUCT SPEC		
0 PLC ± - 1 PLC ± - 2 PLC ± - 3 PLC ± - 4 PLC ± - ANGLES ± - FINISH SEE TABLE		APPLICATION SPEC		108-1093		RECEPTACLE ASSEMBLY, RIGHT ANGLE, AMPMODU System 50		
MATERIAL		WEIGHT		SIZE		CAGE CODE	DRAWING NO	RESTRICTED TO
		-		A2		00779	C=103911	-
SCALE		SHEET		REV		CUSTOMER DRAWING		
4:1		1 of 2		M				


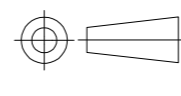
THIS DRAWING IS UNPUBLISHED. RELEASED FOR PUBLICATION  
 © COPYRIGHT - By - ALL RIGHTS RESERVED.

LOC	DIST	REVISIONS					
AD	39	P	LTR	DESCRIPTION	DATE	DWN	APVD
		-		SEE SHEET 1	-	-	-

- ① CONTACT AREA PLATED WITH .000030 GOLD; SOLDER CLIPS AND LEADS PLATED WITH .000150 TIN-LEAD; ALL OVER .000050 NICKEL
- ② POINT OF MEASUREMENT FOR GOLD THICKNESS IS .030 FROM MATING END OF CONTACT
- ③ HOUSING: THERMOPLASTIC, COLOR-BLACK. CONTACT: COPPER ALLOY. SOLDER CLIP: PHOSPHOR BRONZE
- ④ CONTACT AREA PLATED WITH .000030 GOLD; SOLDER CLIPS AND LEADS PLATED WITH .000150 TIN ALL OVER .000050 NICKEL
- ⑤ PRELIMINARY - NOT FOR PRODUCTION
- ⑥ ROHS 2002/95/EC COMPLIANT
- ⑦ FINISH, .000001 MIN. GOLD ON GOLD PLATED AREA, .000150-.000250 MATTE TIN LEAD ON TIN PLATE AREA, UNDER PLATING SHOULD BE .000050-.000100 NICKEL ON ENTIRE CONTACT.
- ⑧ SUPERCEDED BY 5-103911-5
- ⑨ OBSOLETE PARTS: OBSOLETE CIS STREAMLINING PER D.RENAUD/D.SINISI
- ⑩ OBSOLETE
- ⑪ FINISH: .000001 MIN GOLD ON GOLD PLATED AREA. .000150-.000250 MATTE TIN ON TIN PLATED AREA. UNDER PLATING: .000050-.000100 NICKEL ON ENTIRE CONTACT

①⑥	-	.050	.450	.550	11	.644	24	⑤	7-103911-9
	1.175	.050	2.350	2.450	49	2.544	100		7-103911-8
	-	.050	.600	.700	14	.794	30	⑤	7-103911-7
	.925	.050	1.850	1.950	39	2.044	80	⑤	7-103911-6
	-	.050	.850	.950	19	1.044	40	⑤	7-103911-5
	-	.050	1.100	1.200	24	1.294	50	⑤	7-103911-4
	.675	.050	1.350	1.450	29	1.544	60	⑤	7-103911-3
	-	.050	.350	.450	9	.544	20		7-103911-2
	-	.100	-	.200	4	.294	10	⑤	7-103911-1
	④⑥	-	.050	.450	.550	11	.644	24	⑩
1.175		.050	2.350	2.450	49	2.544	100		5-103911-8
-		.050	.600	.700	14	.794	30		5-103911-7
.925		.050	1.850	1.950	39	2.044	80	⑨	5-103911-6
-		.050	.850	.950	19	1.044	40		5-103911-5
-		.050	1.100	1.200	24	1.294	50		5-103911-4
.675		.050	1.350	1.450	29	1.544	60		5-103911-3
-		.050	.350	.450	9	.544	20		5-103911-2
-		.100	-	.200	4	.294	10		5-103911-1
FINISH		F	E	D	C	B	A	NO OF POSN	PART NUMBER

⑦	-	.050	.450	.550	11	.644	24	⑤	2-103911-9
	1.175	.050	2.350	2.450	49	2.544	100	⑤	2-103911-8
	-	.050	.600	.700	14	.794	30	⑤	2-103911-7
	.925	.050	1.850	1.950	39	2.044	80	⑤	2-103911-6
	-	.050	.850	.950	19	1.044	40	⑤	2-103911-5
	-	.050	1.100	1.200	24	1.294	50	⑤	2-103911-4
	.675	.050	1.350	1.450	29	1.544	60	⑤	2-103911-3
	-	.050	.350	.450	9	.544	20	⑤	2-103911-2
	-	.100	-	.200	4	.294	10		2-103911-1
	①	-	.050	.450	.550	11	.644	24	⑩
1.175		.050	2.350	2.450	49	2.544	100		103911-8
-		.050	.600	.700	14	.794	30		103911-7
.925		.050	1.850	1.950	39	2.044	80	⑨	103911-6
-		.050	.850	.950	19	1.044	40	⑧	103911-5
-		.050	1.100	1.200	24	1.294	50		103911-4
.675		.050	1.350	1.450	29	1.544	60		103911-3
-		.050	.350	.450	9	.544	20		103911-2
-		.100	-	.200	4	.294	10		103911-1
FINISH		F	E	D	C	B	A	NO OF POSN	PART NUMBER

THIS DRAWING IS A CONTROLLED DOCUMENT.		DWN	D CLOUSER	3-20-86	 TE Connectivity											
DIMENSIONS: INCHES		CHK	J S STARON	3-20-86												
TOLERANCES UNLESS OTHERWISE SPECIFIED:		APVD	J S STARON	3-20-86												
 0 PLC ± - 1 PLC ± - 2 PLC ± - 3 PLC ± - 4 PLC ± - ANGLES ± -		PRODUCT SPEC	108-1093	NAME		RECEPTACLE ASSEMBLY, RIGHT ANGLE, AMPMODU System 50										
MATERIAL	-	FINISH	SEE TABLE	WEIGHT	-	SIZE	A2	CAGE CODE	00779	DRAWING NO	C=103911	RESTRICTED TO	-			
CUSTOMER DRAWING											SCALE	4:1	SHEET	2 of 2	REV	M